

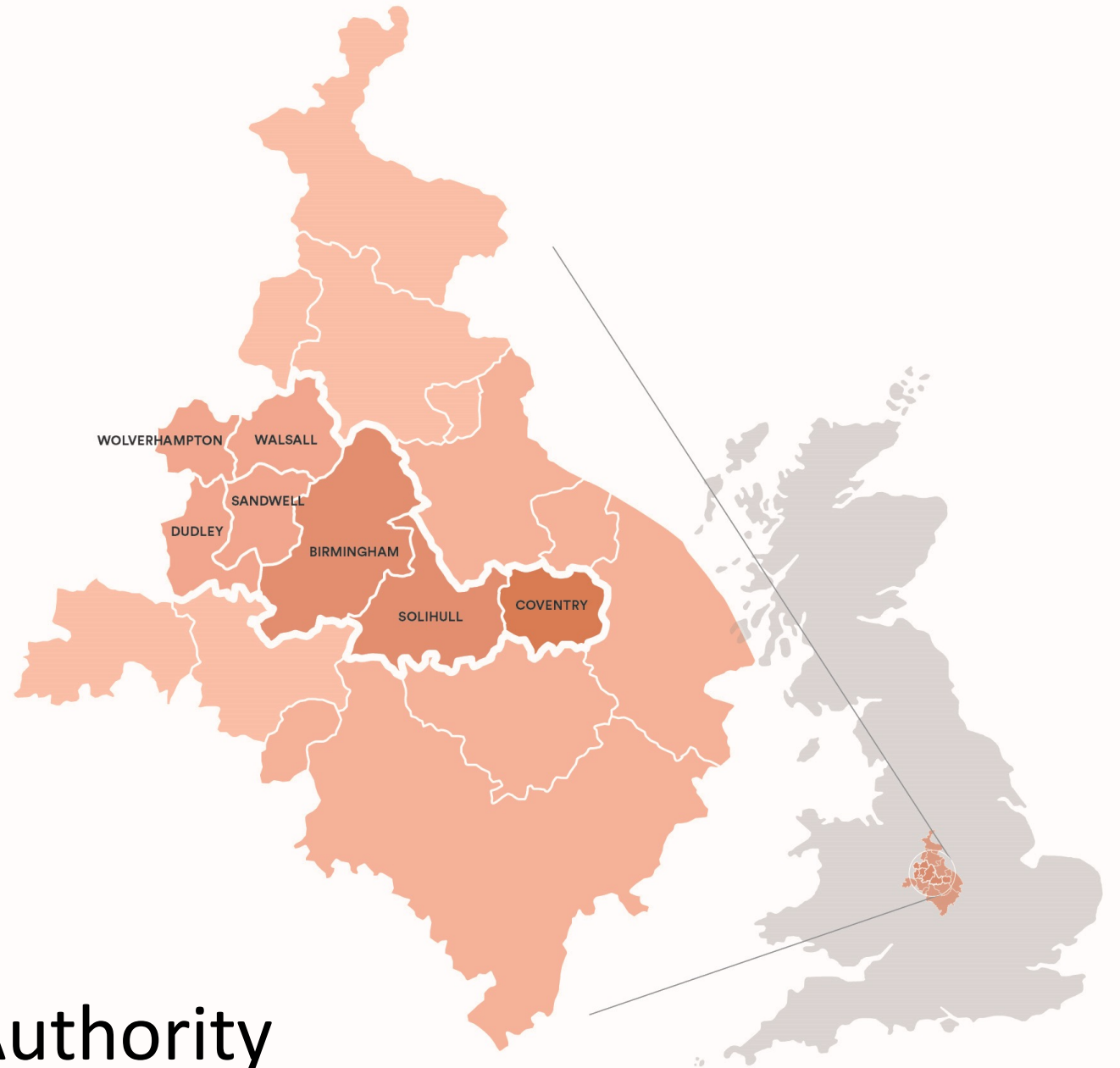
Working in concert
to meet the
climate change
challenge

Cheryl Hiles, Director of Energy Capital
Claire Spencer, Senior Programme Manager,
Inclusive Growth




ENERGYCAPITAL

- Combined authorities are set up by groups of local authorities working together on shared issues: we are stronger together.
- It is not obligatory for a combined authority to be led by an elected mayor, but the Government prefers this model as it makes it easier to agree 'deals' for more local powers and investment.
- There are currently ten combined authorities led by elected mayors, including us in the West Midlands.
- The West Midlands Combined Authority (WMCA) was set up in 2016 and elected its first Mayor in 2017.



West Midlands Combined Authority

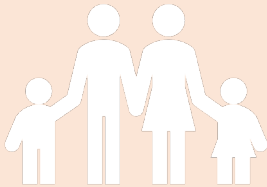


Inclusive growth: a more **deliberate and socially purposeful** model of economic growth – measured not only by how fast or aggressive it is; but also by how well it is created and shared across the **whole population and place**, and by the **social and environmental** outcomes it realises for our people 



CLIMATE
RESILIENCE

Reducing CO₂



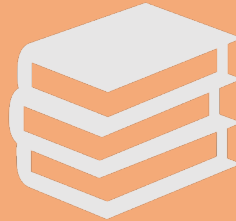
AFFORDABLE
AND SAFE
PLACES

Designing out
homelessness



CONNECTED
COMMUNITIES

Accessibility of
resources and
opportunities



EDUCATION
AND LEARNING

Increased skills
levels



HEALTH AND
WELLBEING

Reduced health
inequalities



EQUALITY

Reduced
employment
inequalities



INCLUSIVE
ECONOMY


Increased
household
income

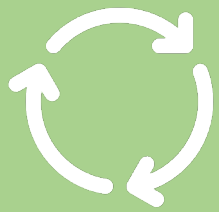


POWER,
INFLUENCE
AND
PARTICIPATION

Citizen
perception of
their influence
and agency

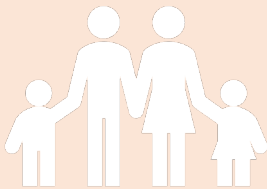


Inclusive growth: a more **deliberate and socially purposeful** model of economic growth – measured not only by how fast or aggressive it is; but also by how well it is created and shared across the **whole population and place**, and by the **social and environmental** outcomes it realises for our people 



CLIMATE
RESILIENCE

Reducing CO₂



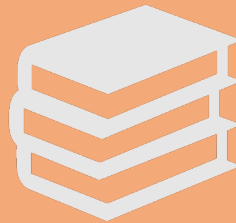
AFFORDABLE
AND SAFE
PLACES

Designing out
homelessness



CONNECTED
COMMUNITIES

Accessibility of
resources and
opportunities



EDUCATION
AND LEARNING

Increased skills
levels



HEALTH AND
WELLBEING

Reduced health
inequalities



EQUALITY

Reduced
employment
inequalities



INCLUSIVE
ECONOMY

Increased
household
income

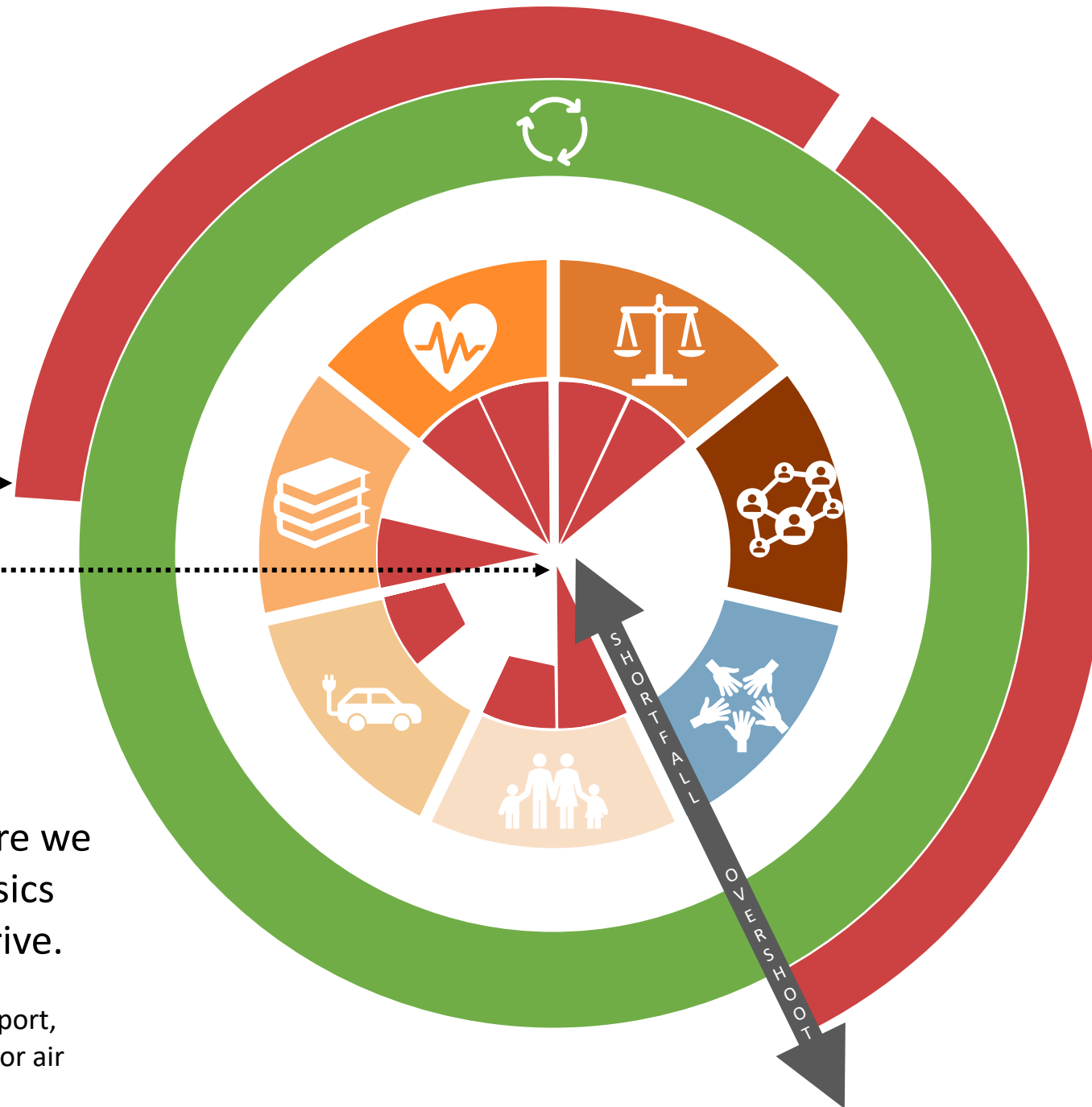


POWER,
INFLUENCE
AND
PARTICIPATION

Citizen
perception of
their influence
and agency

The doughnut model is comprised of two boundaries: planetary and human.

A balanced doughnut (*where we want to be!*) is one where neither boundary is transgressed.



The 'overshoot' shows where we are over-using earth's resources and breaching the planet's ecological ceiling.

For example, carbon-intensive activities and the removal of green spaces



The shortfall shows where we are not providing the basics needed for people to thrive.

For example, access to public transport, adequate childcare support and poor air quality.

The role of the WMCA in climate change



Deliver

In some areas we are responsible for delivering and commissioning services, such as the regional transport system and the provision of adult skills



Enable

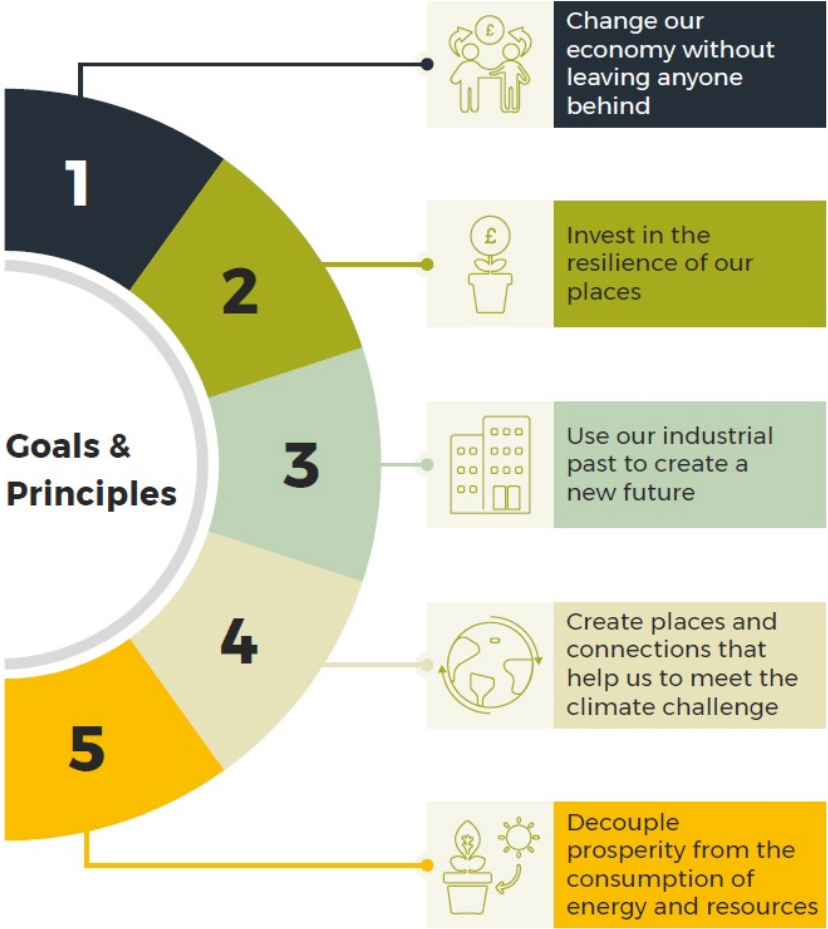
In other areas we convene and guide the work of partners, including developing economic strategy to support regional businesses and unlocking sites for housing and regeneration schemes



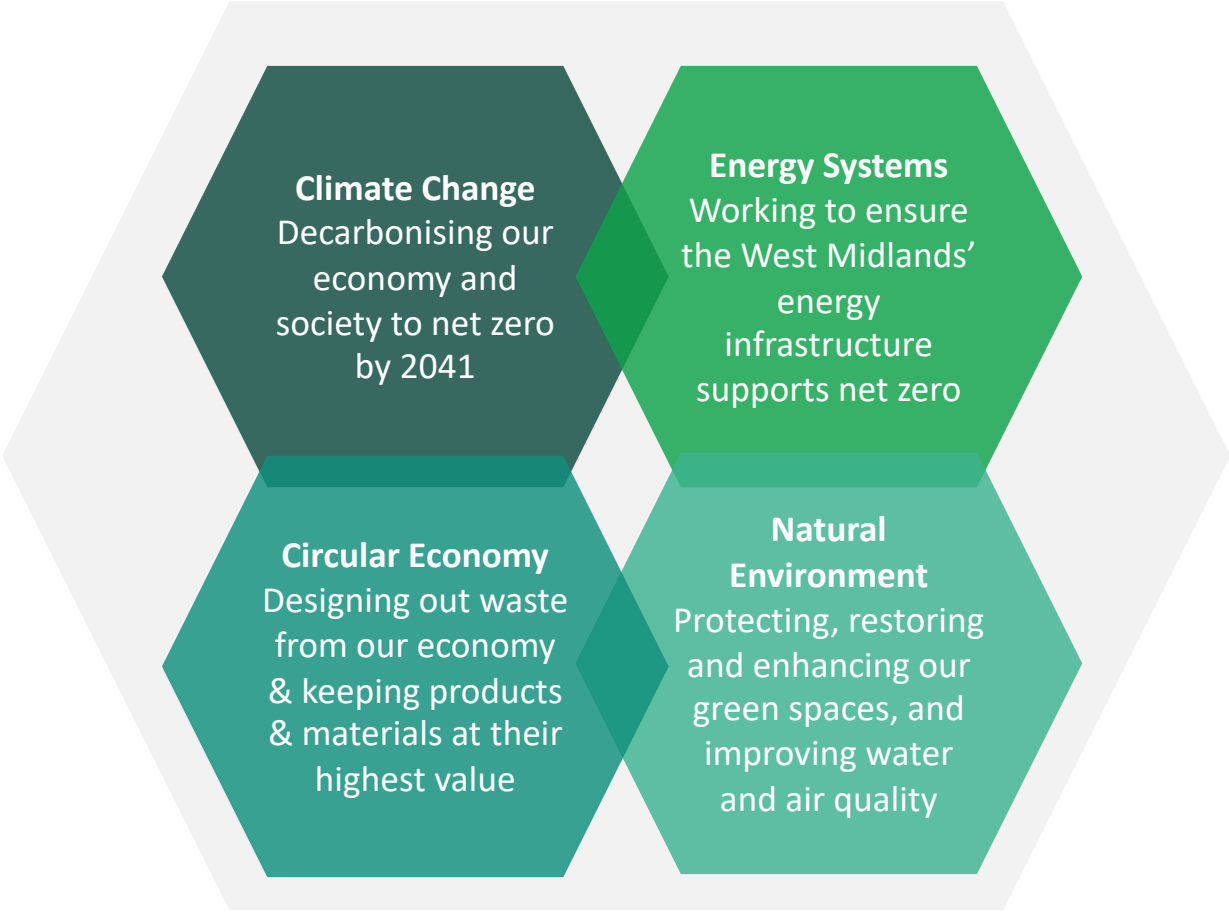
Influence

We also play an advocacy role, amplifying the voice of partners in the region to solve shared challenges and secure new resources or powers

Net Zero goals and principles



Four integrated areas



Third sector collaboration

Net Zero
Neighbourhoods

Community
Green Grants

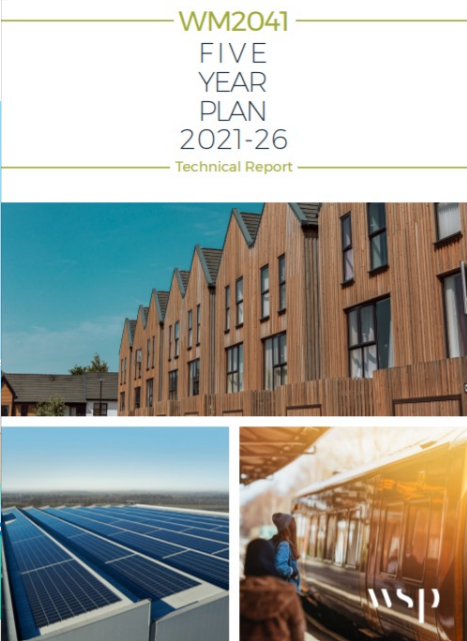
Circular
Economy
Community Hubs

Community
Energy

Carbon
abatement and
sequestration

Behaviour
change and just
transition

WMCA environment and energy strategies



Energy Capital explained

Energy Capital is a public private partnership responsible for the delivery of the **Regional Energy Strategy**. The executive that supports this partnership is hosted by the WMCA, and has grown by 400% since its inception in 2017.

Energy Capital brings the public and private sectors together to deliver place-based energy solutions, with a focus on establishing a smarter national energy system.

With an initial investment of £500k by the WMCA, we have leveraged over £50m into energy and its supply chain across the region



ENERGY CAPITAL



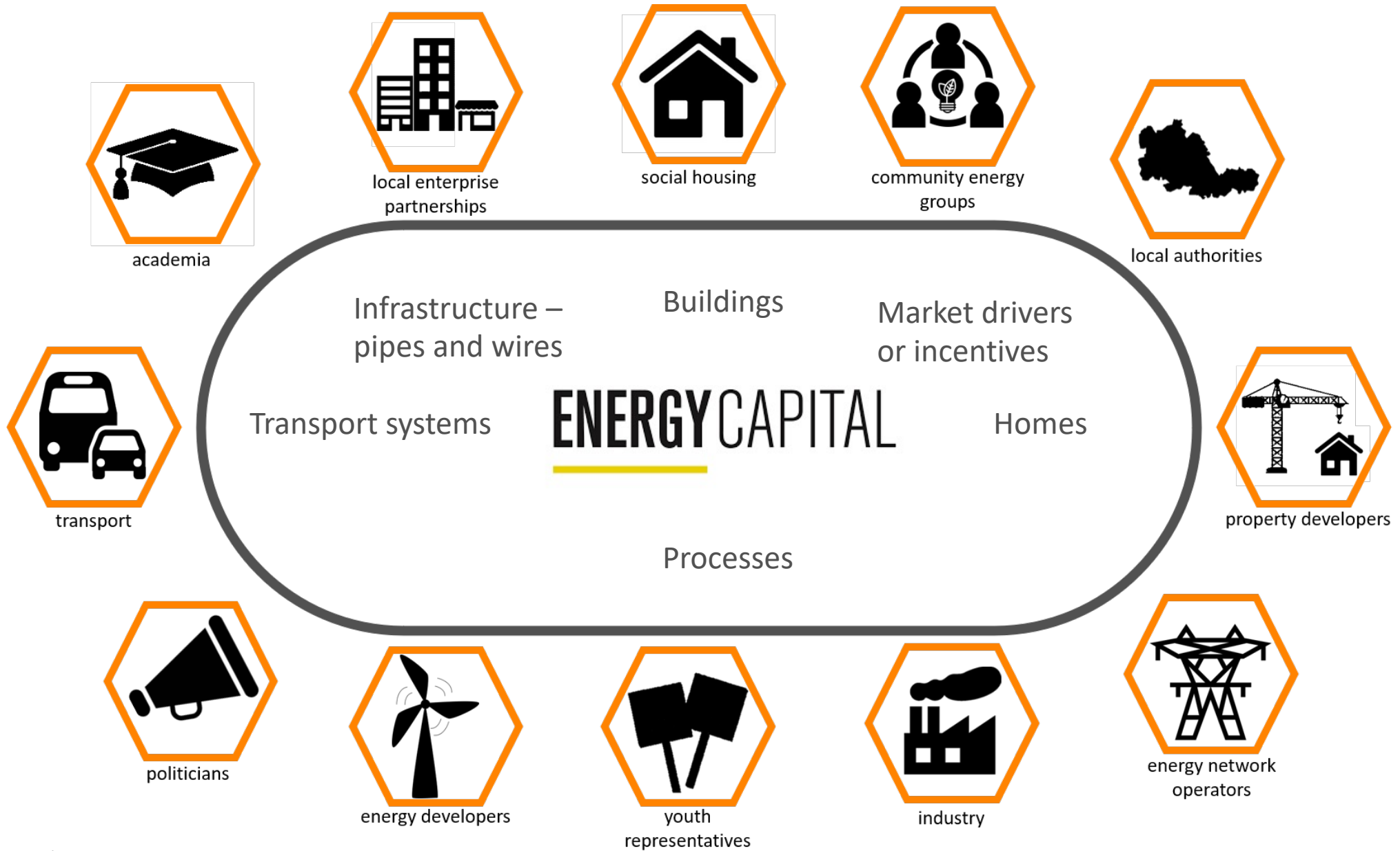
The Energy Capital Partnership

ENERGY CAPITAL

The Energy Capital Partnership is a representative group established by the Mayor and composed of the key organisations responsible for strategic regional energy infrastructure planning and delivery. These include the electricity and gas distribution and transmission network operators, Transport for the West Midlands, the key heat network providers, and strategic economic planning bodies for the region.

The Local Enterprise Partnerships, Local Authorities, local universities and inward investment bodies are also represented, reflecting the key role of place-led innovation in delivering the energy transition.

Our aim is to create an attractive environment for energy innovation to thrive in the West Midlands and position the region as a leader in the global transition to net zero.



Place based innovation

City scale

Solar Thermal collectors -
279MW

Thermal Storage – 89,600
m³

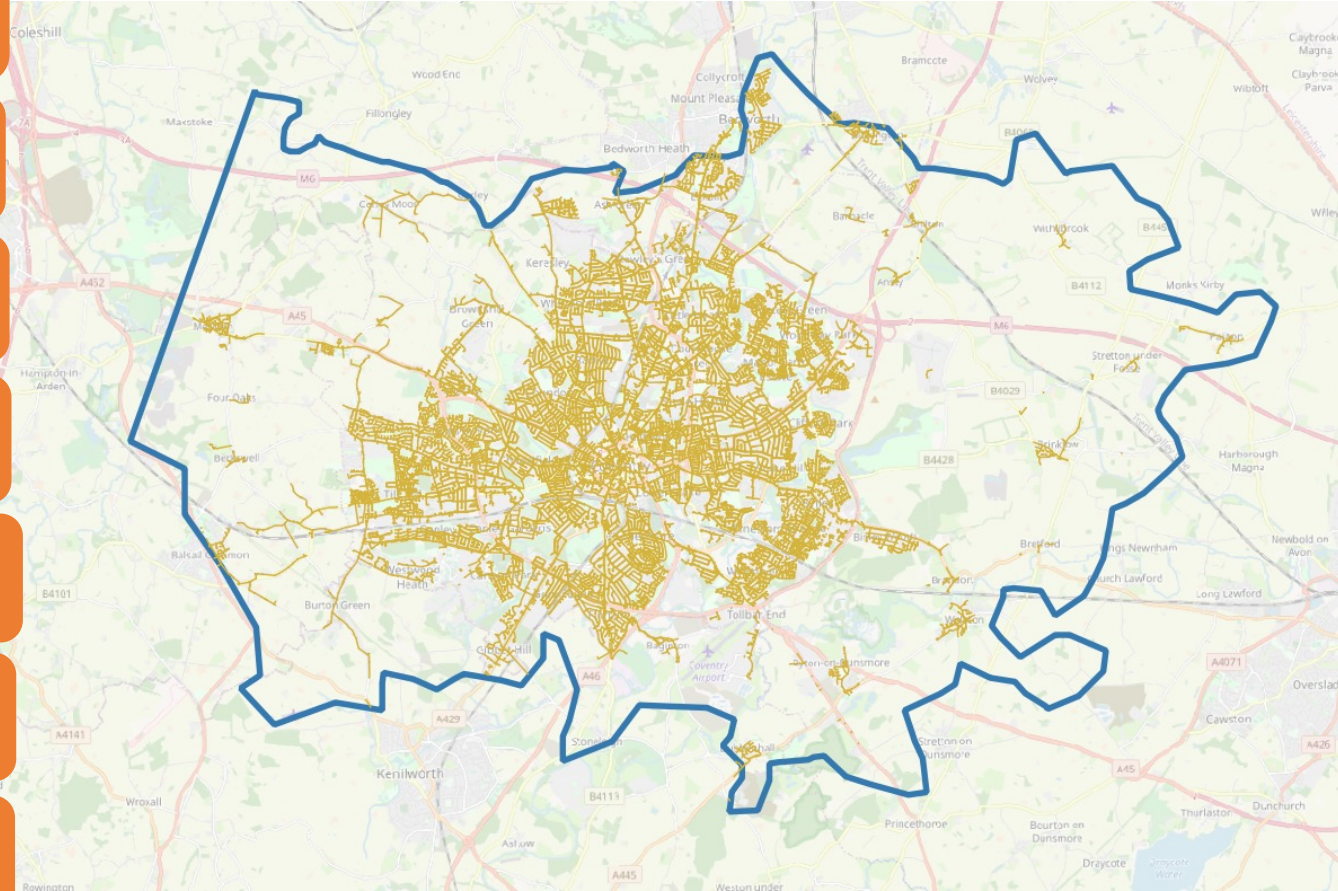
Biomass peak load boilers
- 237MW

Domestic retrofit –
13.8GWh/y savings

Closed Cycle Gasification –
250GWh/y heat

Roof mount PV - 93MW

25,800 domestic EV
chargers



Electrolysis of water –
326 GWh/y H₂

Ground Mount PV -
377MWp

250 vehicle EV Charge
hub

10,915 ASHP's

VLR Charging(x2) & Bus
Charge hub 4.4MW

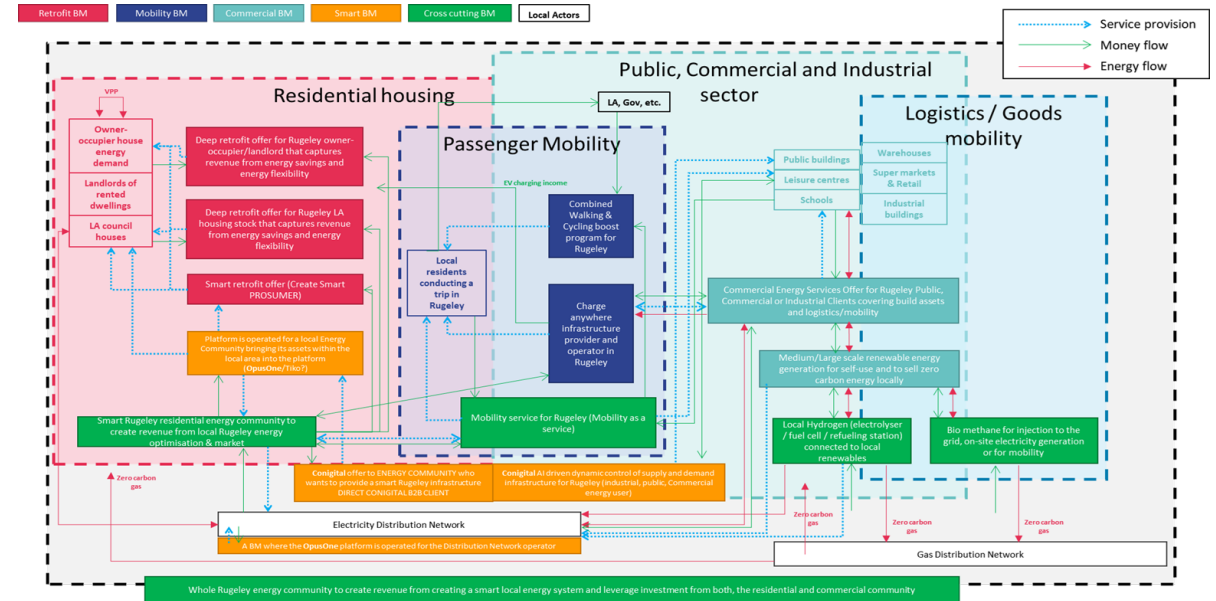
8 gas network islands

5,126 public EV
Chargers



Neighbourhood scale

- Net Zero Neighbourhoods
- Community approach
- Stacking funding



Challenges we are working on...

A long-term focus required from politically-led institutions

Low hanging fruit has been picked

Lack of democratic 'light' on energy infrastructure

Intermittent demand for retrofit skills and services

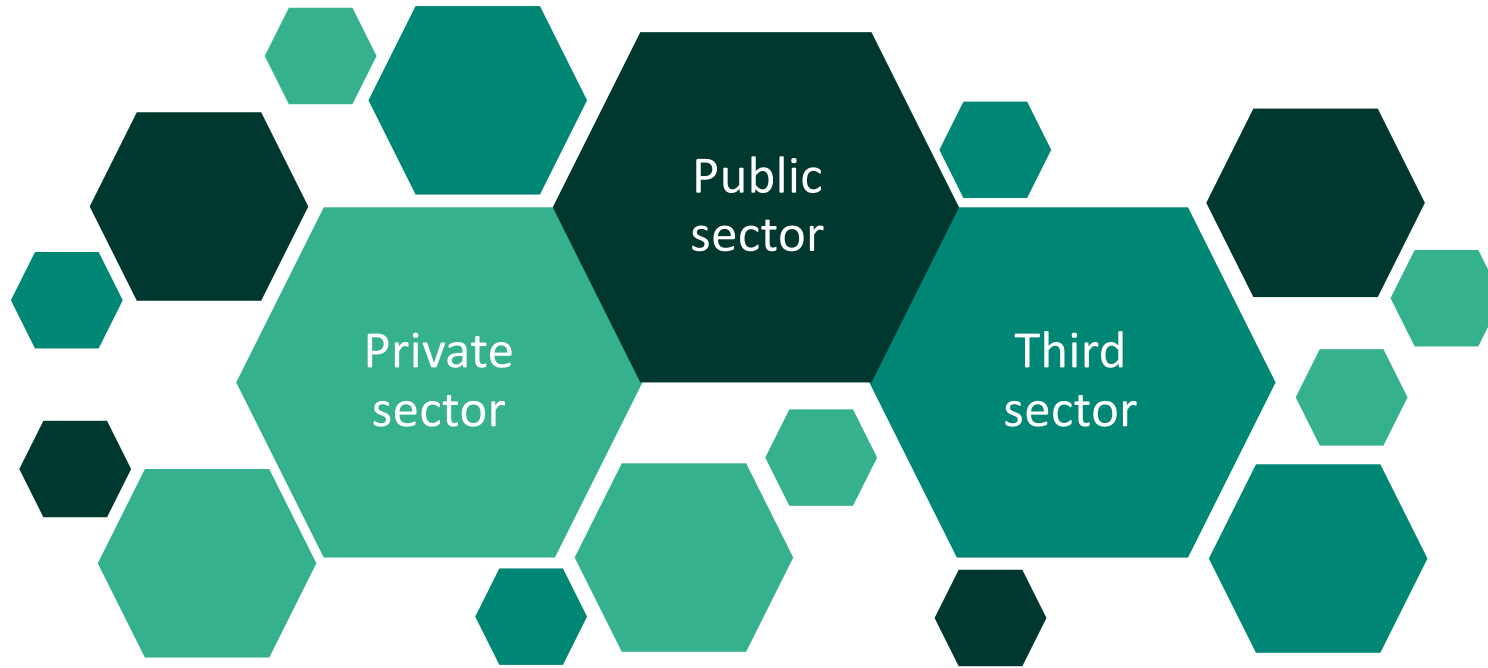
Weak regulation

Accrual of benefits into the future

Sunk costs

Restrictive criteria around funding

Funding challenges



West Midlands
Combined Authority

WEST MIDLANDS
Greener Together





Thank you!



ENERGYCAPITAL